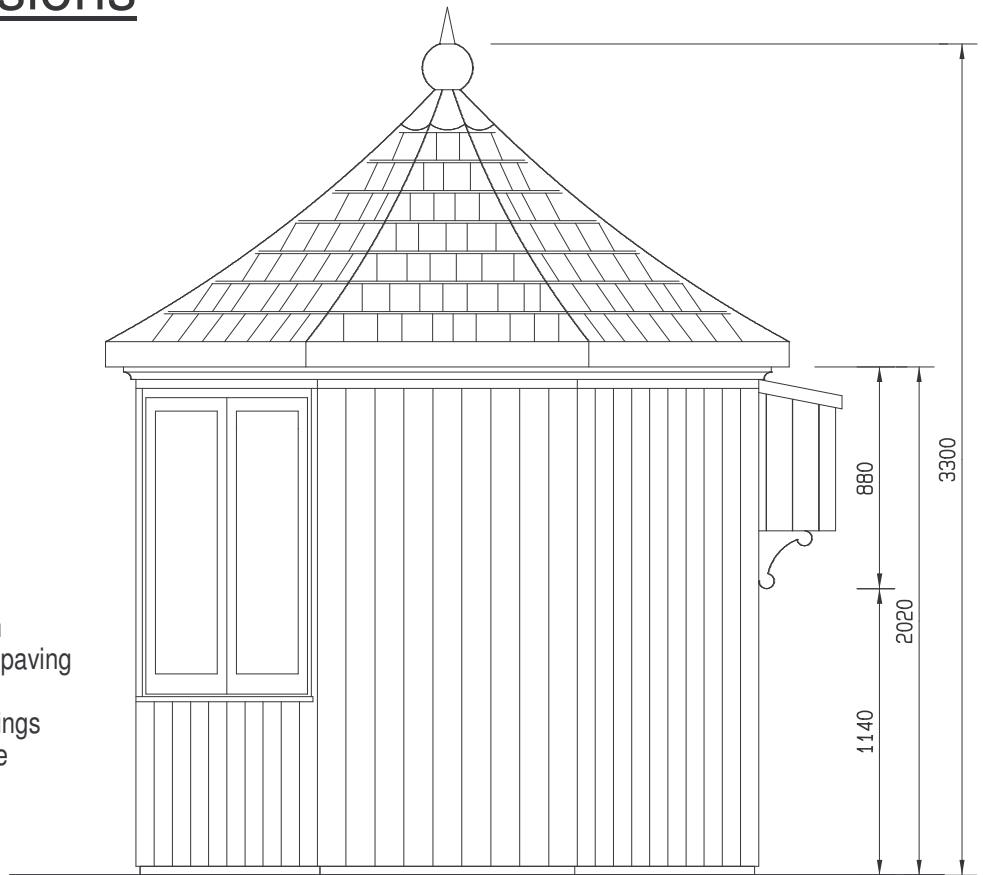


The Burghley Summer House Base Dimensions



Summer house to be placed on a level surface of either smooth paving or concrete slab, that has been prepared with the required footings (please consult a qualified trade person if in doubt)

NB

In very exposed locations it is recommended that metal straps are incorporated into the base work to secure all models to the ground. Metal straps must not be used if the summerhouse is on a rotating base.

